

Compass Directions!



Learning Objective

- To understand how to read directions on maps using the points of the compass.

Success Criteria

- To recognise the purpose of a compass.
- To identify the eight points of the compass.
- To use the points of the compass to provide directions.

What Is This?



What is it used for?

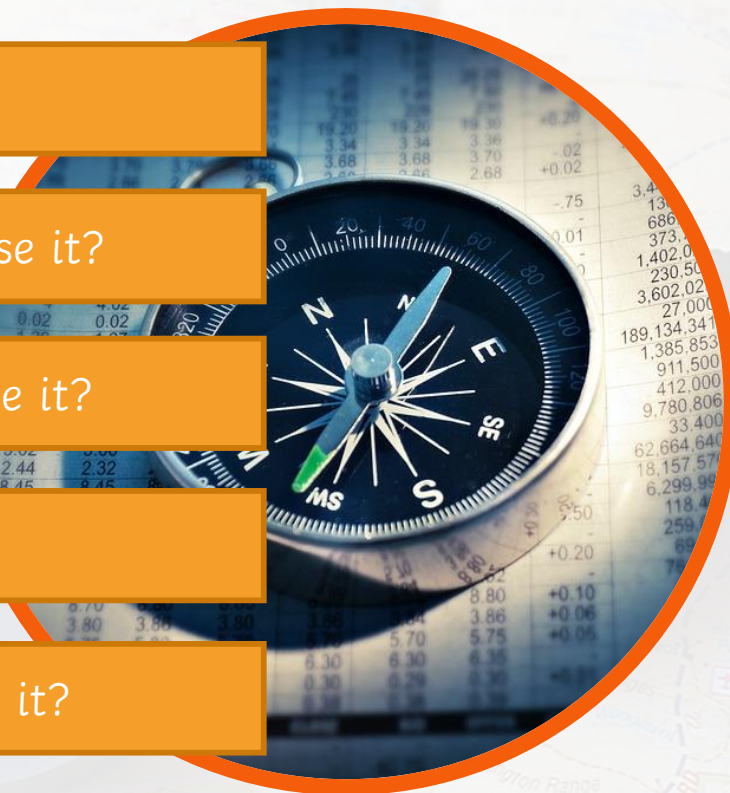
Where might you use it?

When might you use it?

Who would use it?

Why might you use it?

This is a compass!
Have you ever used one?



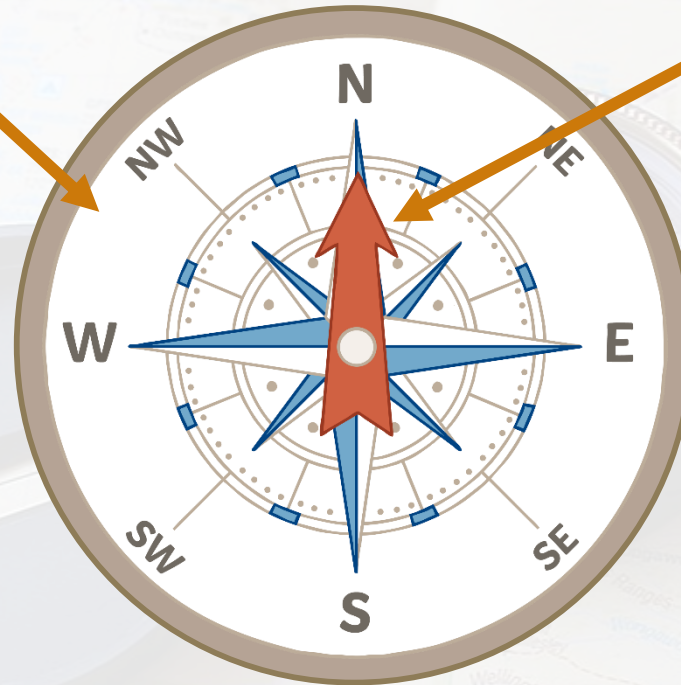
How Does a Compass Work?



A compass has:

A dial used to show direction.

Compasses have been used for over 2000 years!



A magnetic needle which can move freely.

Wherever you stand on earth, a compass will always point to the north magnetic pole!

A compass needle aligns itself and points towards the top of the Earth's magnetic field – the north pole. If the needle points to the N on the compass dial, then the compass is pointing north and can be used to find directions.

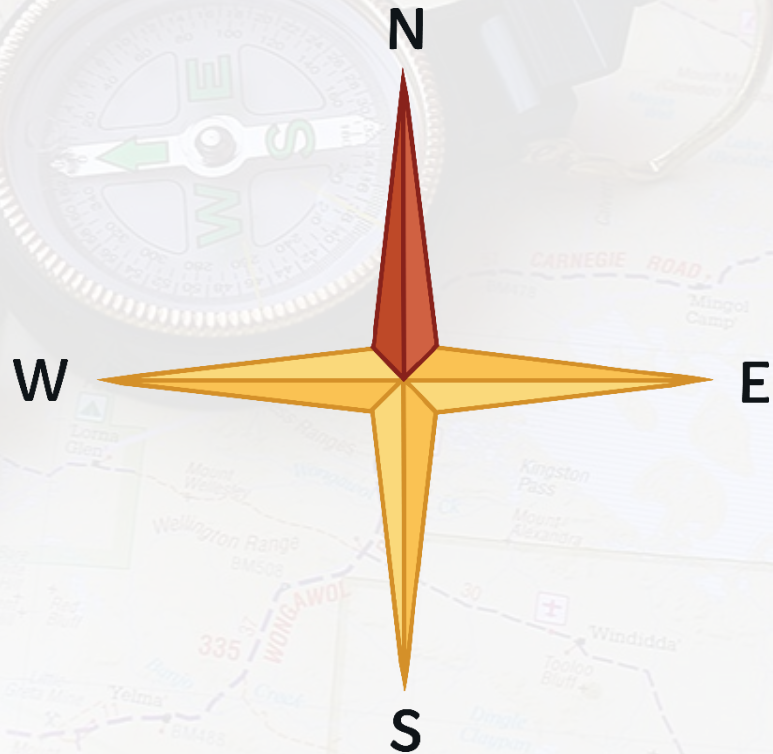
What Are the Points of a Compass?



These are the main four points of the compass:
North, East, South and **West**.

They are called the cardinal points of the compass.

Can you think
of any rhymes
to help you
remember the
cardinal points
of the compass?



What Are the Points of a Compass?



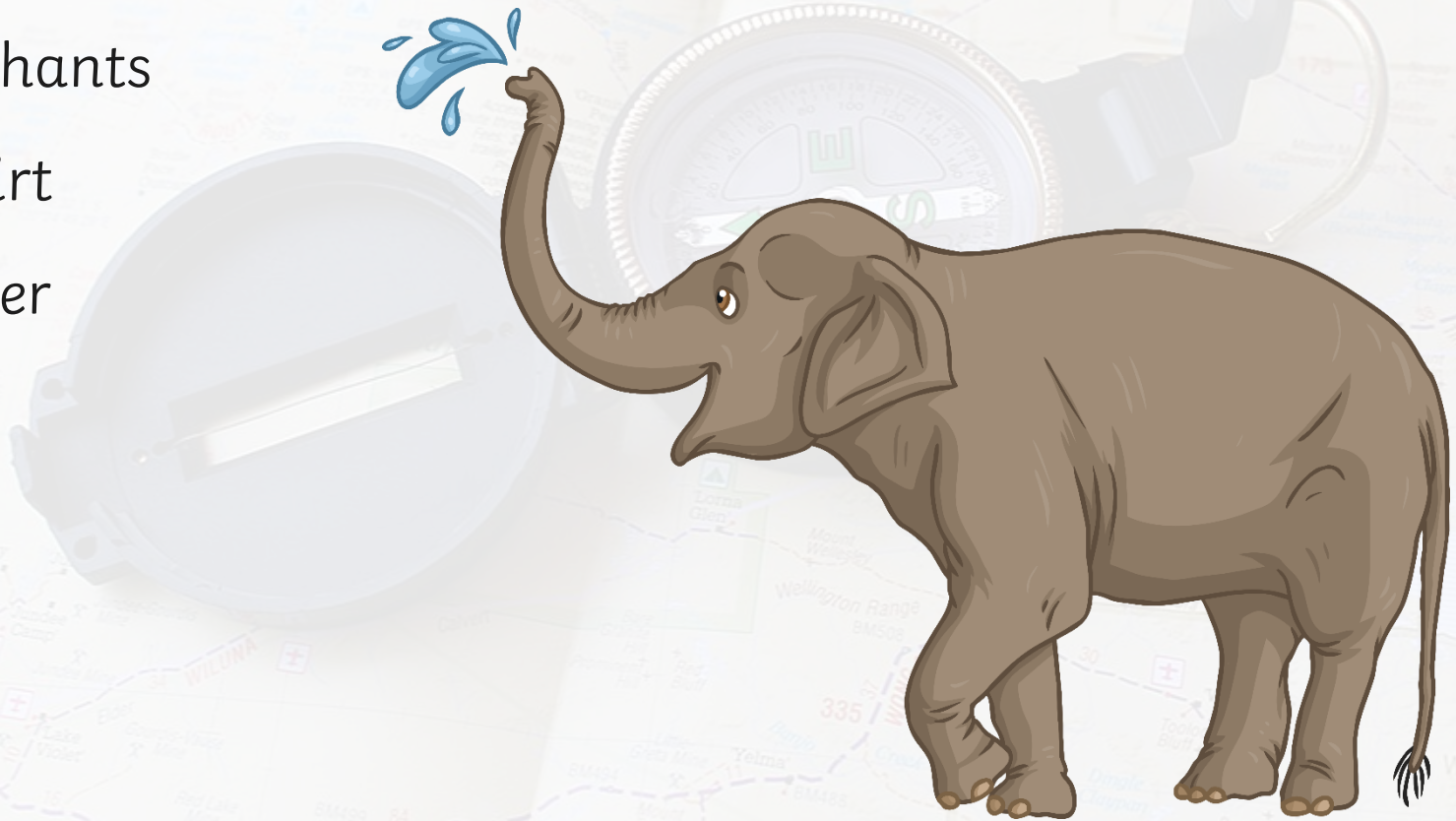
This rhyme is easy to remember...

Naughty

Elephants

Squirt

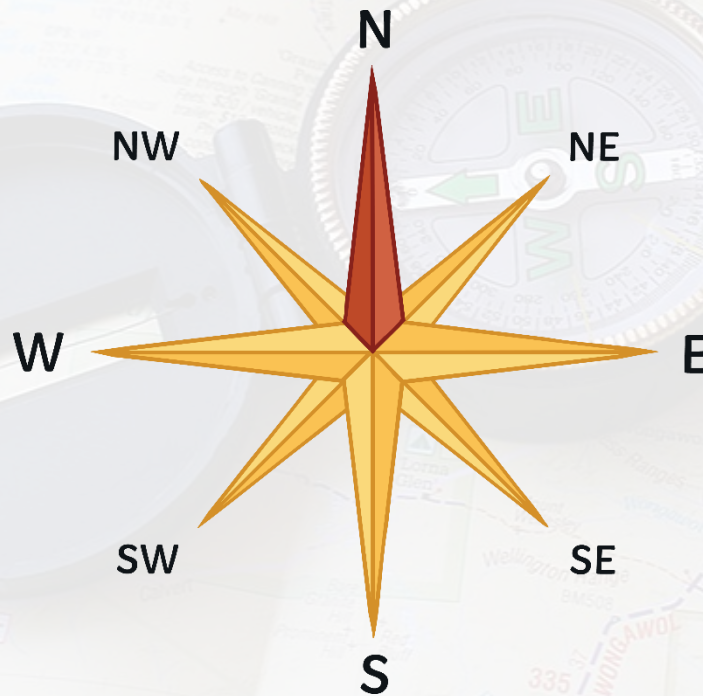
Water



What Are the Points of a Compass?



The four cardinal points can be further divided into eight points of the compass...



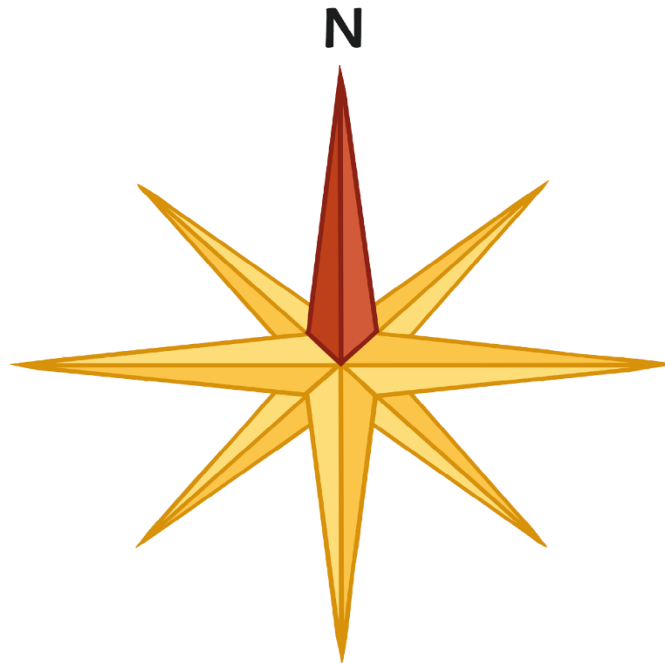
What Are the Points of a Compass?



Label the points of the compass on your **Compass Activity Sheet**.

Compass Rose

Label the eight points of the compass.



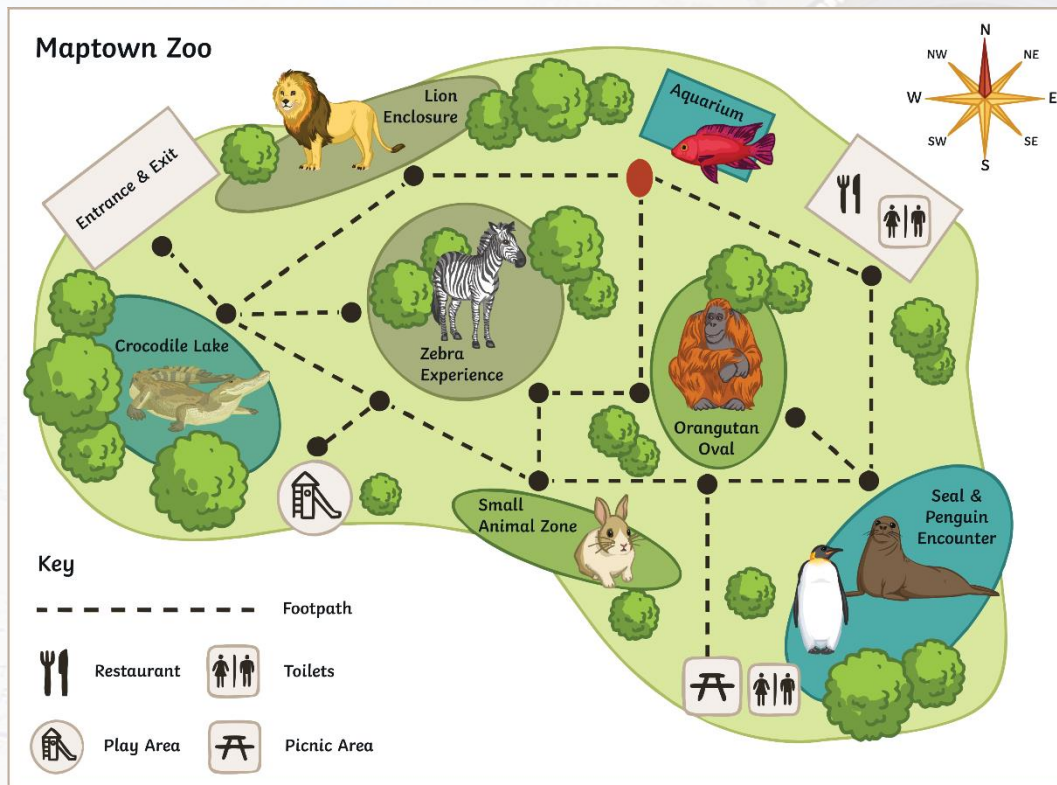
Welcome to Maptown Zoo!



This is a map of Maptown Zoo.

All maps should have a north arrow showing which way is north.

Hint: north usually points to the top of the map!



If you were standing by the aquarium, which direction would you walk to go to:

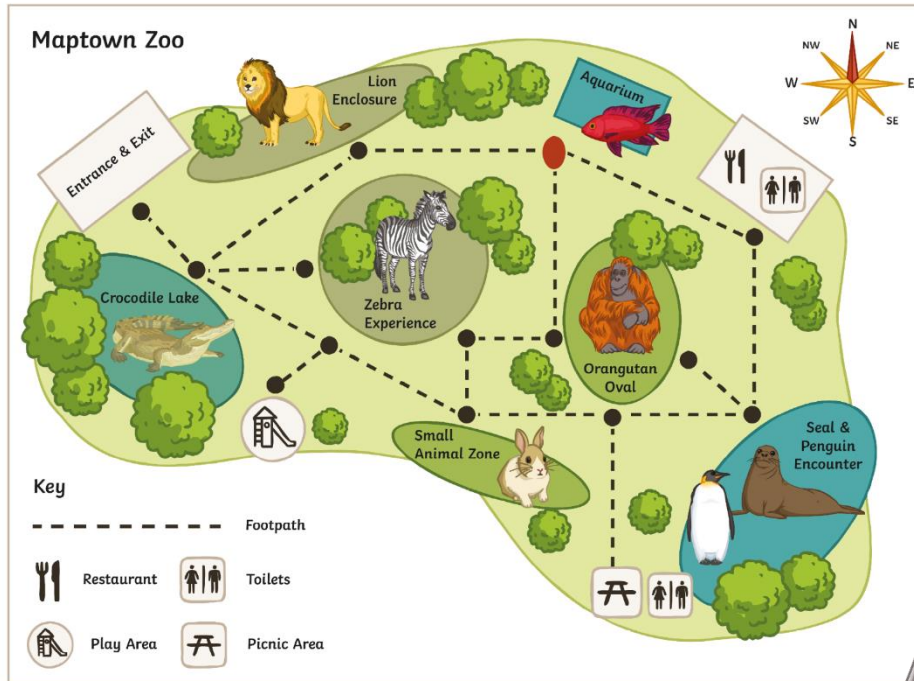
- The Lion Enclosure?
- Orangutan Oval?
- The Restaurant?

Complete the Maptown Zoo Activity Sheet.

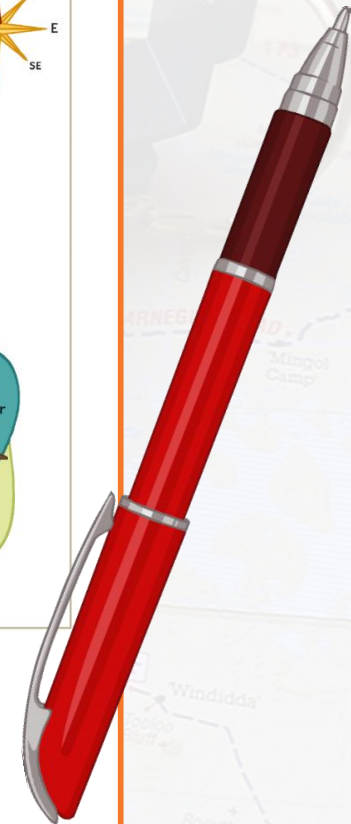


Maptown Zoo

You are on a school trip to Maptown Zoo. Use the compass rose to help you answer the questions below.



1. Following the footpaths, what is the direction from:
 - a. The Lion Enclosure to the Aquarium? _____
 - b. Orangutan Oval to the Picnic Area? _____
 - c. The Restaurant to the Aquarium? _____



Escape from Maptown Zoo!

The animals from Maptown Zoo have escaped! Can you use the clues to work out which animal should be in which square?

1. The lion is in the north west corner.
2. The zebras are on the eastern side of the zoo.
3. The crocodile is directly east of the lions.
4. The seals are in the south east corner.
5. The penguins are directly west of the seals.
6. The orangutan is directly south west of the crocodile.
7. The fish are south of the orangutan.
8. The rabbits are directly north of the zebras.



Escape from Maptown Zoo! Answers

1. The lion is in the north west corner.
2. The zebras are on the eastern side of the zoo.
3. The crocodile is directly east of the lions.
4. The seals are in the south east corner.
5. The penguins are directly west of the seals.
6. The orangutan is directly south west of the crocodile.
7. The fish are south of the orangutan.
8. The rabbits are directly north of the zebras.

